

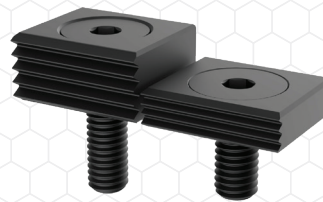
# Clamping, Fixturing and Positioning Components



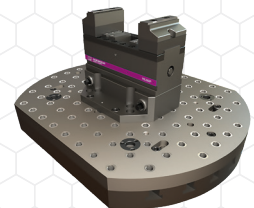
Hoist Rings



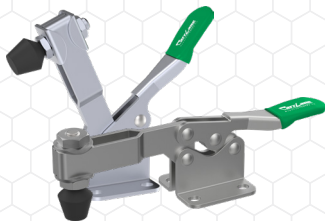
Alignment Pins



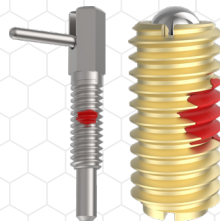
Tiny Vise®  
Edge Clamps



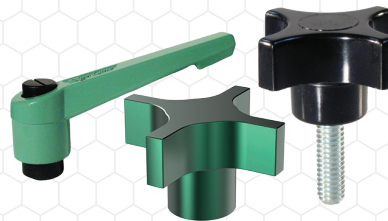
CL5® Quick-Change  
5-Axis Workholding



Toggle Clamps



Spring-Loaded  
Devices



Handles  
& Knobs



Carr Lock® System  
For Fast Fixturing

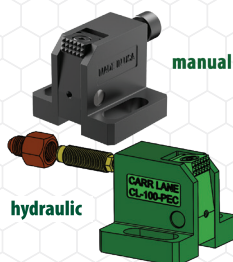
## Carr Lane Offers You More:

- More than 100,000 products — you spend less time searching, which saves you time and money.
- Wide distribution network. To locate your nearest distributor, visit [Carrlane.com/find-a-distributor](https://www.carrlane.com/find-a-distributor)
- Our online catalog at [Carrlane.com](https://www.carrlane.com) is searchable by part number, product name or item category.
- Visit our Engineering Resources section of the website for free CAD files, Calculator Resources and many more tools! Visit [Carrlane.com/Engineering-Resources](https://www.carrlane.com/Engineering-Resources)

Are you searching for an equivalent Carr Lane part for a competitor's part? Our powerful search tool allows you to find the Carr Lane alternative seamlessly by entering the part number.

Visit [Carrlane.com/competitor-part-search](https://www.carrlane.com/competitor-part-search) to receive stock status and equivalent information.

Carr Lane's product line is constantly evolving to provide customers with the latest in industrial parts technology. Our newest products are denoted by green ribbons and stars in our online catalog. Browse the latest in Carr Lane technology, with updated Alignment Pins, Hoist Rings, Work Supports, Locators, Clamps and more.



### Pivoting Edge Clamps

- Replaceable serrated gripper made of hardened tool steel
- Clamping force provides both forward and downward force at the same time
- Adjustable slotted base, secured with two Socket Head Cap Screws
- Can be converted to hydraulic operation



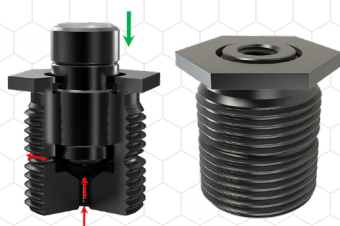
### High Capacity Toggle Clamp

- New and improved for safety and hardened bushings at critical pivot points
- Features a slotted base that allows for both inch and metric hole mounting
- 1,000 lbs. holding capacity



### Hoist Eye 360®

- 360 degree rotation after installation, aligning it with the pulling direction
- Can be used at full rated load capacity regardless of pulling angle from the bolt axis
- Available in standard sizes from 3/8"-16 to 1"-8



### Air Rest Buttons

- Allows using pneumatic position control to detect proper workpiece loading
- Proper placement of workpiece will full retract plunger into the body
- Can be read using a pressure sensor which can be tied into PLC or a control system



### Captive Locating Screw

- Available in sizes from 1/4"-20 to 1/2"-13 and metric sizes from M6 to M12 with screw lengths from 1 1/4" to 3" or 30 mm to 75 mm
- Can be used to simply clamp a workpiece or used in locating and clamping
- When fully retracted it will prevent removal through spring force exerted from the bushing spring clip